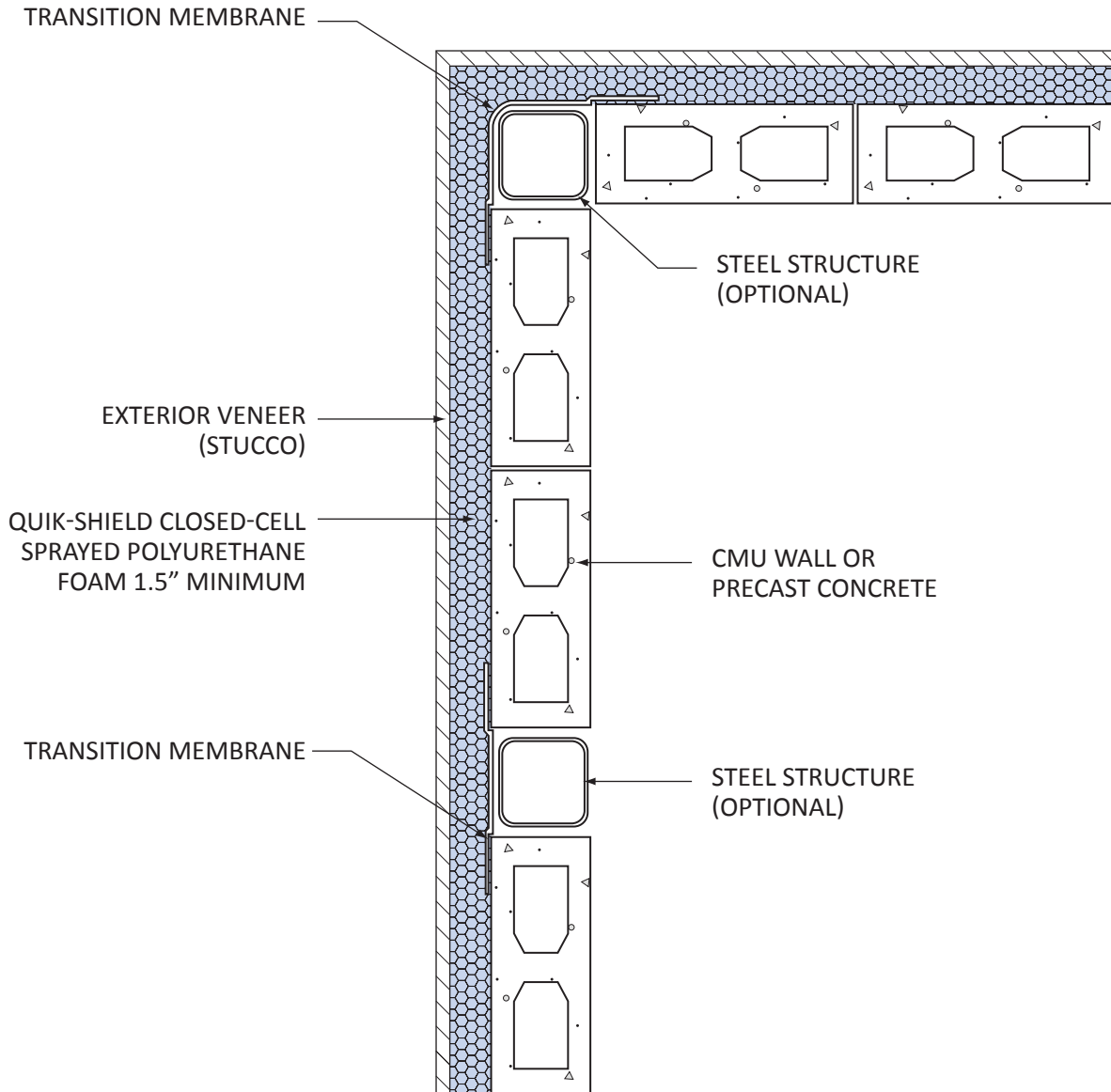


QUIK-SHIELD



Quik-Shield spray foam insulation thickness and vapor retarder applied to meet local code requirements. Closed-cell insulation applied externally in areas subject to damage from termites - check local code for approved protection method.

MASONRY OR CONCRETE WALL
FACE SEALED (TOP VIEW)
QSW-251A 07-2012



SWD Urethane
Mesa, Arizona
800-828-1394
swdurethane.com