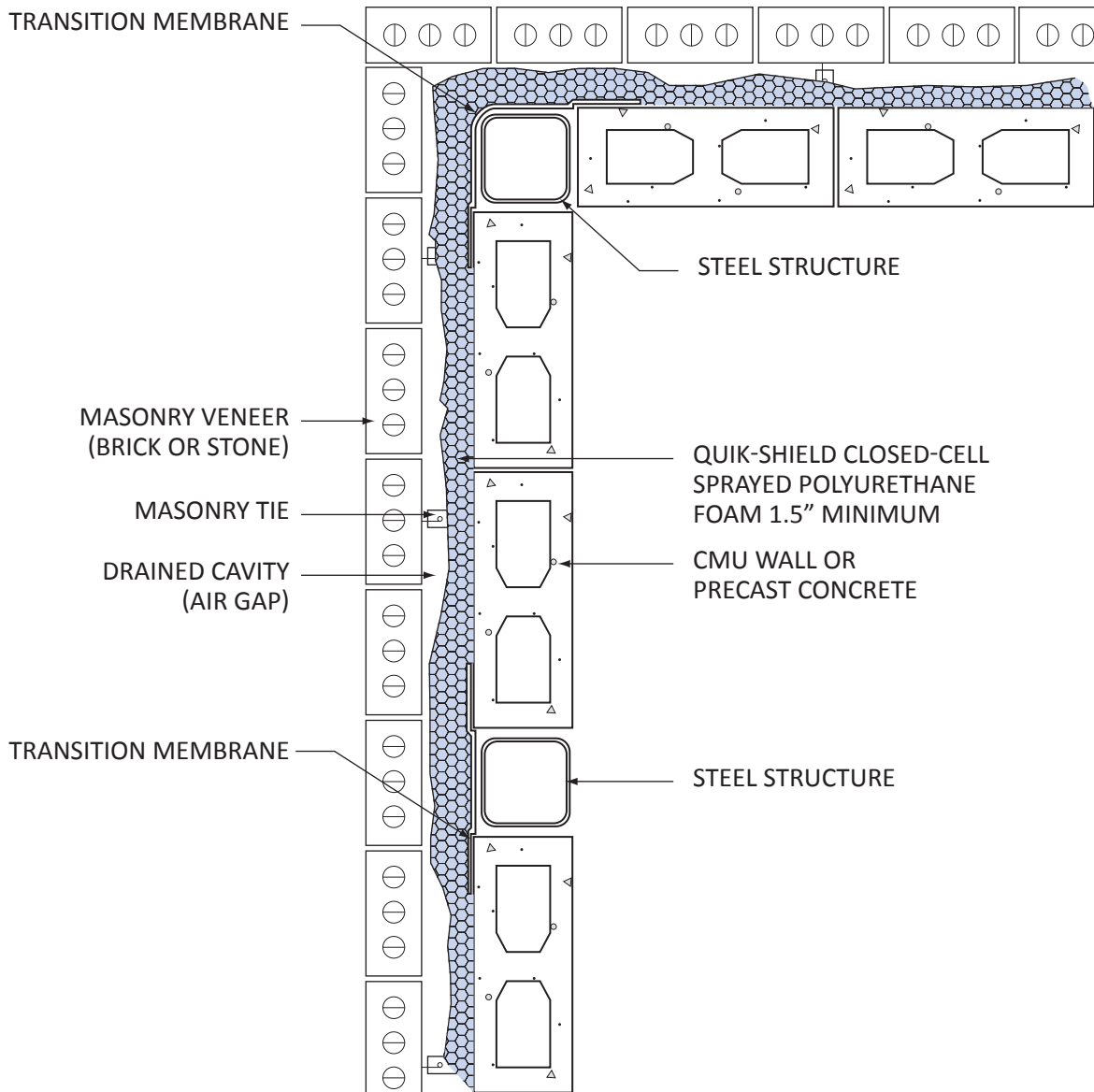


# QUIK-SHIELD



Quik-Shield spray foam insulation thickness and vapor retarder applied to meet local code requirements. Closed-cell insulation applied externally in areas subject to damage from termites - check local code for approved protection method.

MASONRY OR CONCRETE WALL  
DRAINED SCREENED (TOP VIEW)  
QSW-253A 07-2012



SWD Urethane  
Mesa, Arizona  
800-828-1394  
swdurethane.com