



## Evaluation Report CCMC 13390-R

MASTERFORMAT: 07 21 19.03  
Issued: 2010-10-12  
Revised: 2011-01-31  
Re-evaluation due: 2013-10-12

---

# SWD Quik-Shield<sup>®</sup> 106

## 1. Opinion

It is the opinion of the Canadian Construction Materials Centre (CCMC) that “SWD Quik-Shield<sup>®</sup> 106” when used as a thermal insulation in accordance with the conditions and limitations stated in Section 3 of this Report, complies with the National Building Code 2005:

- Clause 1.2.1.1.(1)(b), Division A, as an alternative solution that achieves at least the minimum level of performance required by Division B in the areas defined by the objectives and functional statements attributed to the following applicable acceptable solutions:
  - Sentence 9.25.2.2.(1) Insulation Materials

This opinion is based on CCMC's evaluation of the technical evidence in Section 4.1 provided by the Report Holder.

## 2. Description

The product is a Type 1, spray-in-place, low-density, semi-flexible plastic foam that has an open-cell structure. The product consists of: "Quick-Shield<sup>™</sup> A" and "Quick-Shield<sup>™</sup> 106" resin, which are mixed on-site by a qualified installer using positive displacement equipment in a 1:1 fixed-ratio.

The final cured product is yellow and has a density of 7.21 kg/m<sup>3</sup>. At a 25.4-mm thickness the thermal resistance is 0.63 m<sup>2</sup>·C/W.

## 3. Conditions and Limitations

CCMC's compliance opinion in Section 1 is bound by the “SWD Quik-Shield<sup>®</sup> 106” being used in accordance with the conditions and limitations set out below.

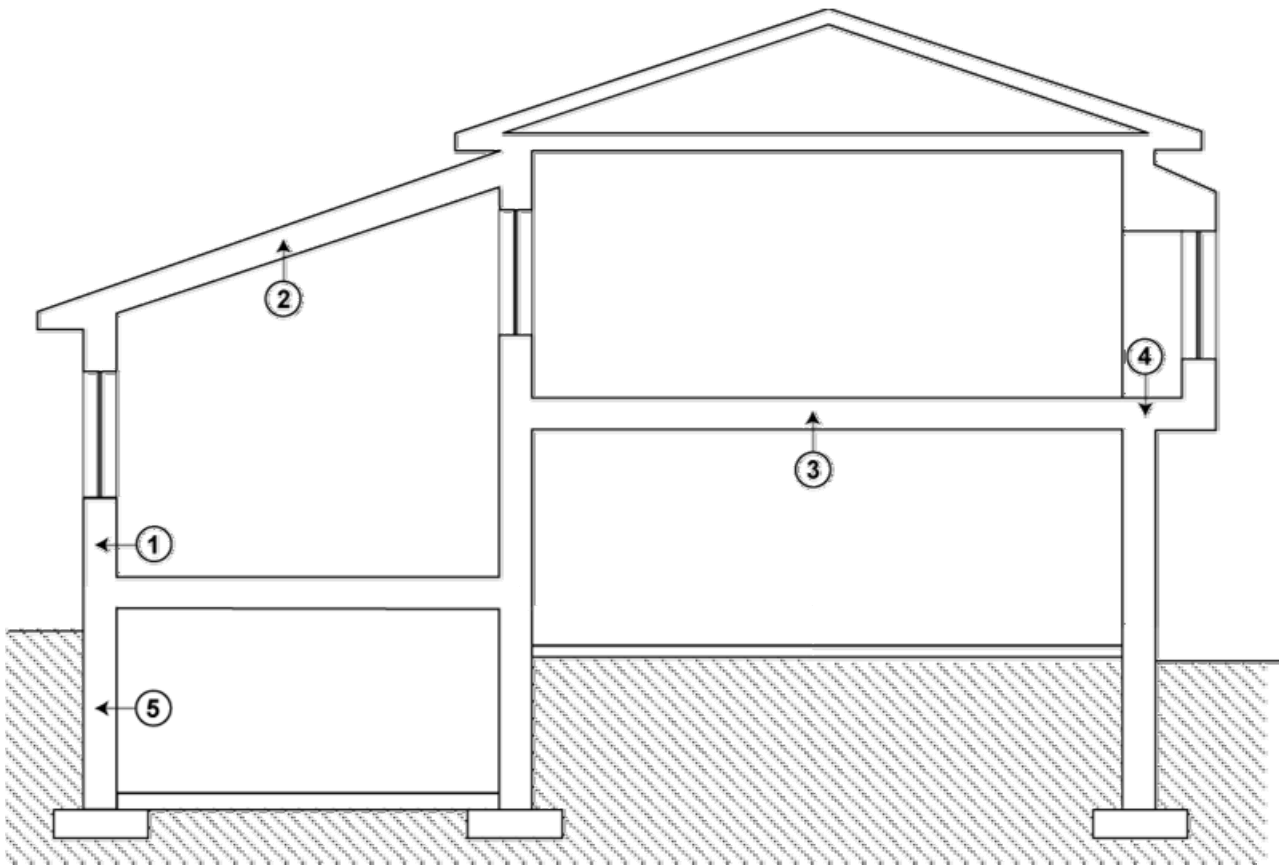
- As specified by the manufacturer, the product must be manufactured on-site by qualified installers trained and approved by SWD Urethane Company with subsequent field auditing of installers by Intertek<sup>(1)</sup>. Intertek is the third-party certification organization specified by SWD Urethane Company to certify the training program and provide follow-up inspections of qualified installers who are licensed to spray semi-flexible urethane-based foam insulation in accordance with the SWD Urethane Company Installer's Manual.

*(1) The Intertek field quality assurance program calls for periodic audits of the installers, usually random inspections with some mandatory inspections of larger projects. Building officials may contact Intertek (1-905-678-7820) and require an inspection for a specific job site if the building official deems it necessary. In cases where the installation is deemed non-conforming by Intertek/SWD Urethane Company and is not being remedied by the installer, Intertek/SWD Urethane Company will inform the owner/architect/building official of the non-conforming installation.*

- The product can be installed in new or retrofit constructions. In either case, the product must be installed in open cavities in the following locations in a wood-frame construction that meets the requirements of the NBC 2005:
  - exterior walls including perimeter joists;
  - cathedral ceilings with a vented air space as required by the NBC 2005;
  - floors separating living spaces from a garage;
  - cantilever overhang floors; and
  - interior below-grade foundation walls.

The application locations are illustrated in Figure 1.

- The building envelope where the product is installed must conform to the requirements of the NBC 2005 for vapour barriers, air barriers, and dampproofing (interior below-grade walls).
- For retrofit applications, whereby there may be occupants in the unaltered part of a building, the qualified installer must ensure that the spraying area is isolated and negatively pressurized by using an exfiltration rate of 0.3 air changes per hour for at least one (1) day. An independent toxicological assessment determined that this ventilation rate must also be in effect for one (1) day before occupancy is permitted in the newly insulated suite.
- The sprayed material should completely cover the surfaces between the studs, joists and other framing members. The surfaces to be covered should be clean, dry, and not covered in frost, oil, grease, dust or other unsuitable material. As required in Article 9.25.2.3., Installation of Thermal Insulation, of Division B of the NBC 2005, the insulation must be installed so that there is a reasonably uniform insulating value over the entire face of the insulated area.
- The interior side of the applied semi-flexible polyurethane insulation must be covered with an approved thermal barrier as per Article 9.10.17.10., Protection of Foamed Plastics, of Division B of the NBC 2005.
- The insulation must be kept away from heat-emitting devices, such as recessed light fixtures and chimneys at the minimum distance required by building regulations and safety codes.
- The maximum in-service temperature of the insulation must not exceed 70°C.
- The product must not be used where it may come in contact with water and must not be installed after its expiry date of six (6) months from the date of manufacture.
- The isocyanate and polyol resin components must have their respective containers (i.e. drums) identified by the phrase “CCMC 13390-R.”
- The installation procedure must follow the manufacturer's instruction manual. A copy of the manual must be available at the job site at all times during the installation for review by the building official.



**Figure 1. Application locations in a wood-frame construction in open cavities:**

- 1) above-grade wall
- 2) cathedral ceiling (vented)
- 3) floor above garage
- 4) cantilever floor
- 5) interior foundation wall

## 4. Technical Evidence

CCMC's Technical Guide for "SWD Quik-Shield®106" sets out the nature of the technical evidence required by CCMC to enable it to evaluate a product as an acceptable or alternative solution in compliance with the NBC 2005. The Report Holder has submitted test results for CCMC's evaluation. Testing was conducted at independent laboratories recognized by CCMC. The corresponding test results for "SWD Quik-Shield®106" are summarized below.

### 4.1 NBC 2005 Compliance Data for "SWD Quik-Shield®106" on which CCMC Based its Opinion in Section 1

#### 4.1.1 Performance Requirements

##### 4.1.1.1 Test Results

**Table 4.1.1.1 Test results for the product**

Property	Requirement		Result
Density (kg/m <sup>3</sup> )	> 6.8		7.21
Thermal resistance at 25-mm thickness (m <sup>2</sup> ·C/W)	Report value		0.63
Water vapour transmission for 50-mm thickness (ng/Pa·s·m <sup>2</sup> )	> 1400		2140
Water absorption (%)	Report Value		2.9
Dimensional changes (% volumetric) when exposed to: <ul style="list-style-type: none"> <li>• 80°C and ambient R.H.</li> <li>• 70°C and 97±3% R.H.</li> <li>• -29°C and ambient R.H.</li> </ul>	Min.	Max.	—
	-15	+ 10	-12.1
	-15	+ 14	-7.6
	-1	—	+0.8
Emissions - time to occupancy	(1)		Pass

**Note to Table 4.1.1.1:**

(1) The Volatile Organic Compound (VOC) emissions under consideration were measured with an assumed room ventilation rate of 0.3 air changes per hour as per the NBC requirements for new constructions. The determination of emissions and room concentration calculations were done by the Saskatchewan Research Council. An independent toxicological report recommends a residential time-to-occupancy of one (1) day. While the testing and evaluation represent the current state-of-the-art in toxicological evaluation, such tests and their results do not purport to be conclusive with respect to the impact on health.

### 4.2 Additional Performance Data Requested by the Report Holder

Data in this section does not form part of CCMC's opinion in Section 1.

#### 4.2.1 Fire Test Results

**Table 4.2.1 Fire test results conducted on the product<sup>(1)(2)</sup>**

Property	Requirement	Result
Flame-spread rating <sup>(3)</sup> (CAN/ULC-S102 and CAN/ULC-S127)	Report value	25
Smoke development	Report value	315

**Notes to Table 4.2.1:**

(1) The thickness tested was 89 mm.

(2) The samples tested were not cut as per Sentence 9.10.3.2.(2). of Division B of the NBC 2005.

(3) Contact SWD Urethane Company for a flame-spread rating when required for code-compliance.

Report Holder: SWD Urethane Company  
PO Box 1422  
222 South Date Street  
Mesa, AZ 85210  
U.S.A.  
Tel: 480-969-8413  
Fax: 480-461-6926  
E-mail: Sales@swdurethane.com  
Web: [www.swdurethane.com](http://www.swdurethane.com)

Plant(s): Mesa, AZ, U.S.A.

*This Report is issued by the Canadian Construction Materials Centre, a program of the Institute for Research in Construction at the National Research Council of Canada. The Report must be read in the context of the entire CCMC Registry of Product Evaluations, including, without limitation, the introduction therein which sets out important information concerning the interpretation and use of CCMC Evaluation Reports.*

*Readers must confirm that the Report is current and has not been withdrawn or superseded by a later issue. Please refer to <http://www.nrc-cnrc.gc.ca/eng/services/irc/ccmc.html>, or contact the Canadian Construction Materials Centre, Institute for Research in Construction, National Research Council of Canada, 1200 Montreal Road, Ottawa, Ontario, K1A 0R6. Telephone (613) 993-6189. Fax (613) 952-0268.*

***NRC has evaluated the material, product, system or service described herein only for those characteristics stated herein. The information and opinions in this Report are directed to those who have the appropriate degree of experience to use and apply its contents. This Report is provided without representation, warranty, or guarantee of any kind, expressed, or implied, and the National Research Council of Canada (NRC) provides no endorsement for any evaluated material, product, system or service described herein. NRC accepts no responsibility whatsoever arising in any way from any and all use and reliance on the information contained in this Report. NRC is not undertaking to render professional or other services on behalf of any person or entity nor to perform any duty owed by any person or entity to another person or entity.***